

# Allstar

Konstantin Grcic, 2014

vitra.



## Allstar

The Allstar chair defies conventional categorisations: is it a chair for office workplaces or the home office? What period is it from? Does it fulfil specific functions? What is it made of? In developing Allstar, Konstantin Grcic kept such formulations open in order to provide office workers with a relaxed home-like feel and sense of familiarity. The form of Allstar is emblematic and appealing. It seems as though this chair has always existed, which inspires a feeling of trust and security. Exuding casual ease and comfort, it yields a calming influence and de-accelerates the fast-paced dynamic of today's offices.

At the same time – though concealed from the eye – Allstar contains the necessary functional features of an office chair: a synchronised mechanism with lockable positioning, seat depth and height adjustment, and an adjustable

backrest. A stout loop frame made of robust plastic simultaneously performs the function of armrests, backrest support and extended arm of the mechanical unit. It enables the separate movement of seat and backrest and transfers the forces to the mechanical unit under the seat. The organically shaped cushions of the seat and back work together with the technical functions to ensure a high level of comfort. This makes Allstar suited to a wide variety of settings where high functional performance is desired but a classic office chair would not be appropriate for aesthetic reasons – an ideal choice for modern workplace concepts or co-working spaces as well as home offices.

Allstar comes in different colour versions. The base and fabric seat cushion are always black while the armrests and backrest are coordinated in various colour combinations. Allstar is also available with covers in leather.

## Materials

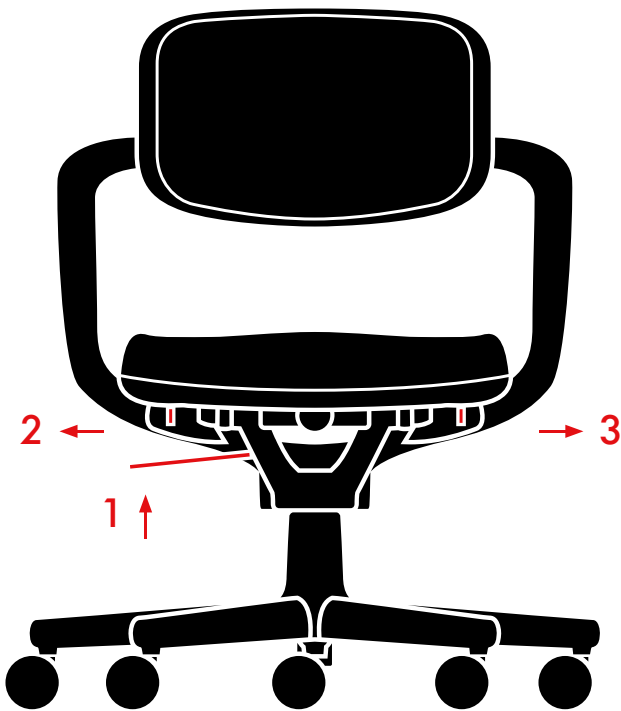
- **Office swivel chair in accordance with EN 1335.**
- **Backrest and seat:** backrest in polyamide, coated with polyurethane foam. Height of backrest adjustable up to 5 cm using a quick release lever. Seat with contouring on the front edge, consisting of a polyamide seat plate, polyurethane foam and a seat cover stretched over the surface. Cover in Hopsak fabric, Silk Mesh or leather. For Hopsak covers, the seat is always in nero and the backrest is available in all colours; for Silk Mesh covers, both seat and back are always in nero; for leather covers, the seat and back are available in 3 colours (dimgrey 21, nero 66, marron 69).
- **Armrest/back bracket:** loop frame made of polyamide that simultaneously serves as the armrest structure, back support and an extended arm of the technical mechanism. Available in 4 colours.
- **Mechanical unit:** the synchronised mechanism can be locked in the upright position. Equipped with seat height and seat depth adjustment as standard features. In plastic (deep black).
- **Base:** five-star base in polyamide (deep black) with double castors (Ø 60 mm, basic dark).

## FUNCTIONAL FEATURES

Despite its outward simplicity, Allstar contains all the functions necessary for an office chair according to current standards: a synchronised mechanism, seat depth and height adjustment,

and an adjustable backrest that can be locked in the upright position.

- 1 Seat height
- 2 Seat depth
- 3 Locking mechanism
- 4 Backrest (upright position)
- 5 Backrest height



## COLOUR COMBINATIONS

To simplify the selection of available colour options, Vitra and Konstantin Grcic have developed a number of recommended colour combinations – so-called Beauty Versions. Based on the

colour of the loop armrests, coordinated colours have been specified for the various fabric covers.

### Seat upholstery



Hopsak 66  
nero



Leather 66  
nero

### Armrests/back bracket

12 deep black



### Backrest upholstery



Hopsak 72  
yellow/  
poppy red



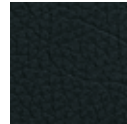
Hopsak 67  
poppy red/  
ivory



Hopsak 68  
pink/poppy red



Hopsak 66  
nero



Leather 66  
nero

### Seat upholstery



Hopsak 66  
nero



Leather 21  
dimgrey

### Armrests/back bracket

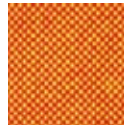
04 white



### Backrest upholstery



Hopsak 66  
nero



Hopsak 72  
yellow/  
poppy red



Hopsak 88  
cognac/ivory



Hopsak 79  
warmgrey/  
ivory



Leather 21  
dimgrey

### Seat upholstery



Hopsak 66  
nero



Leather 69  
marron

### Armrests/back bracket

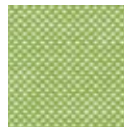
95 signal  
green



### Backrest upholstery



Hopsak 70  
grass-green/  
forest



Hopsak 69  
grass-green/  
ivory



Hopsak 66  
nero



Leather 69  
marron

### Seat upholstery



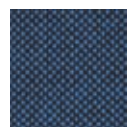
Hopsak 66  
nero

### Armrests/back bracket

61 aquamarine



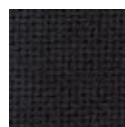
### Backrest upholstery



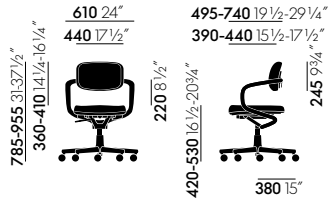
Hopsak 84  
blue/moor  
brown



Hopsak 83  
blue/ivory



Hopsak 66  
nero

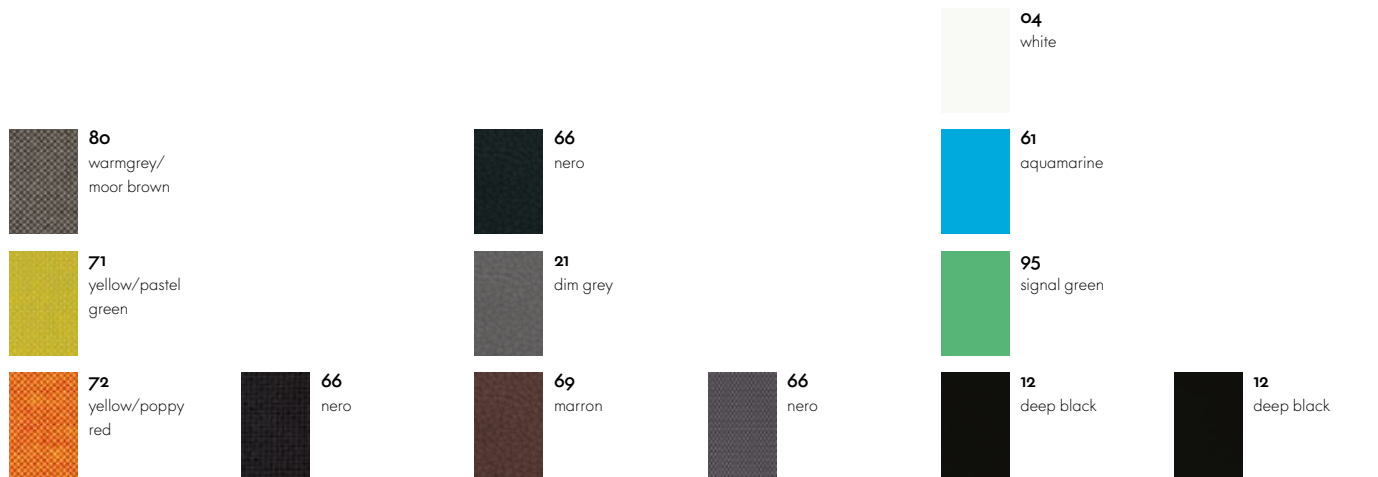


**Allstar**

**SURFACES AND COLOURS**



**Hopsak (back)**



**Hopsak (back)**

**Hopsak (seat always nero)**

**Leather (back and seat)**

**Silk Mesh (back and seat)**

**Armrests/back bracket**

**Base**

